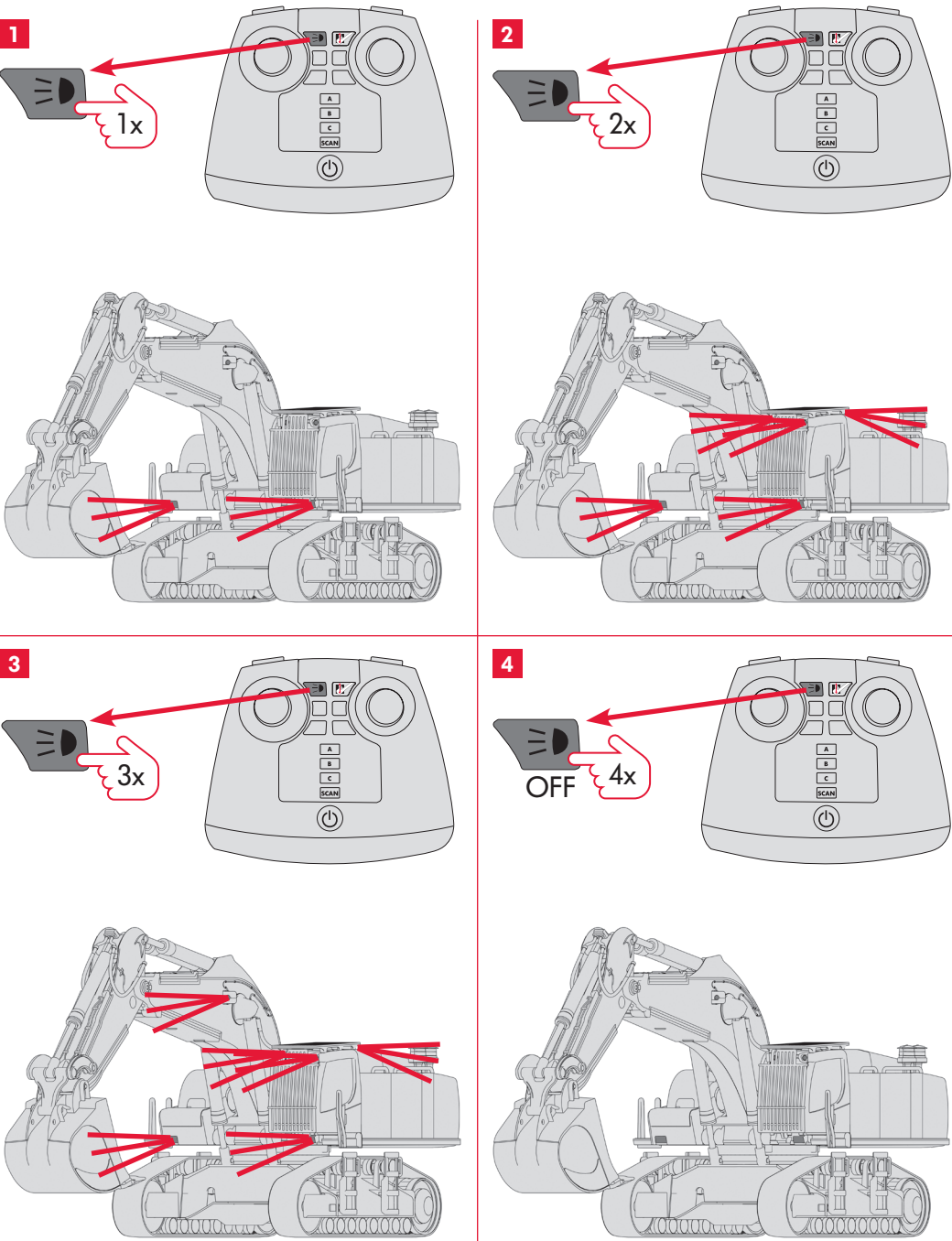
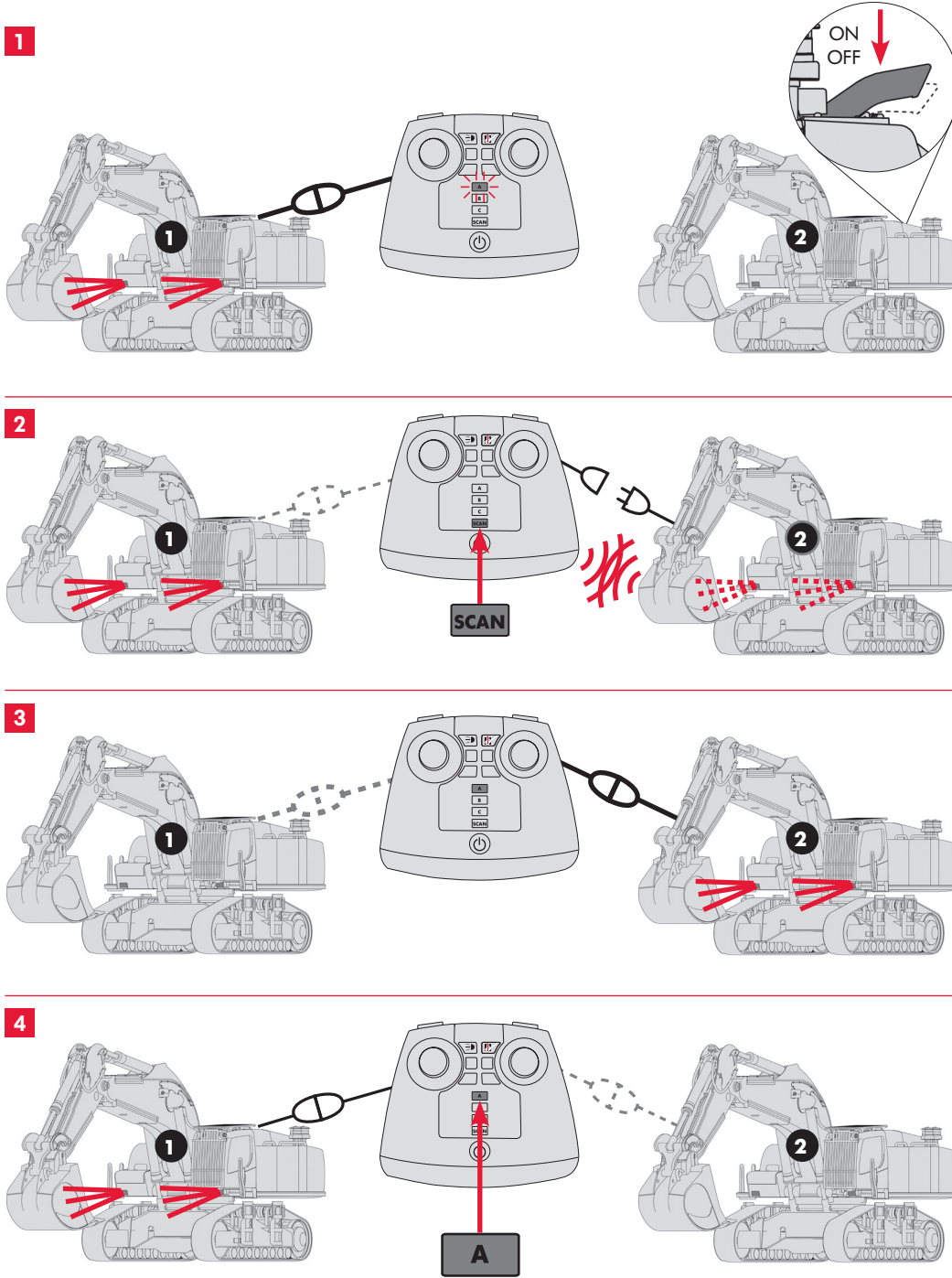


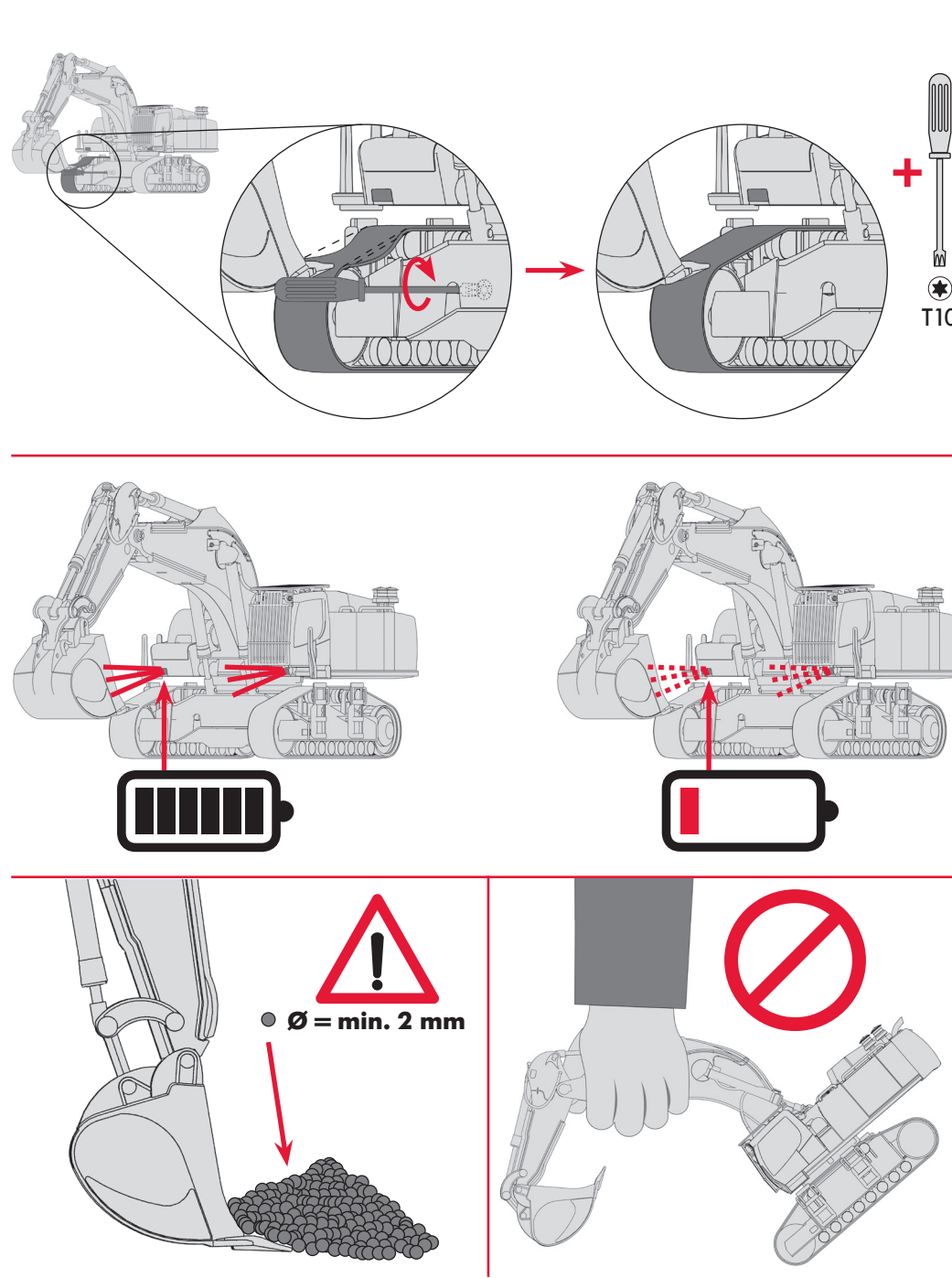
G Licht / Lights / Lumière / Luces / Verlichting



H Hinzufügen weiterer Modelle / add further models / Ajouter d'autres modèles / Añadir más modelos / Andere modellen toevoegen



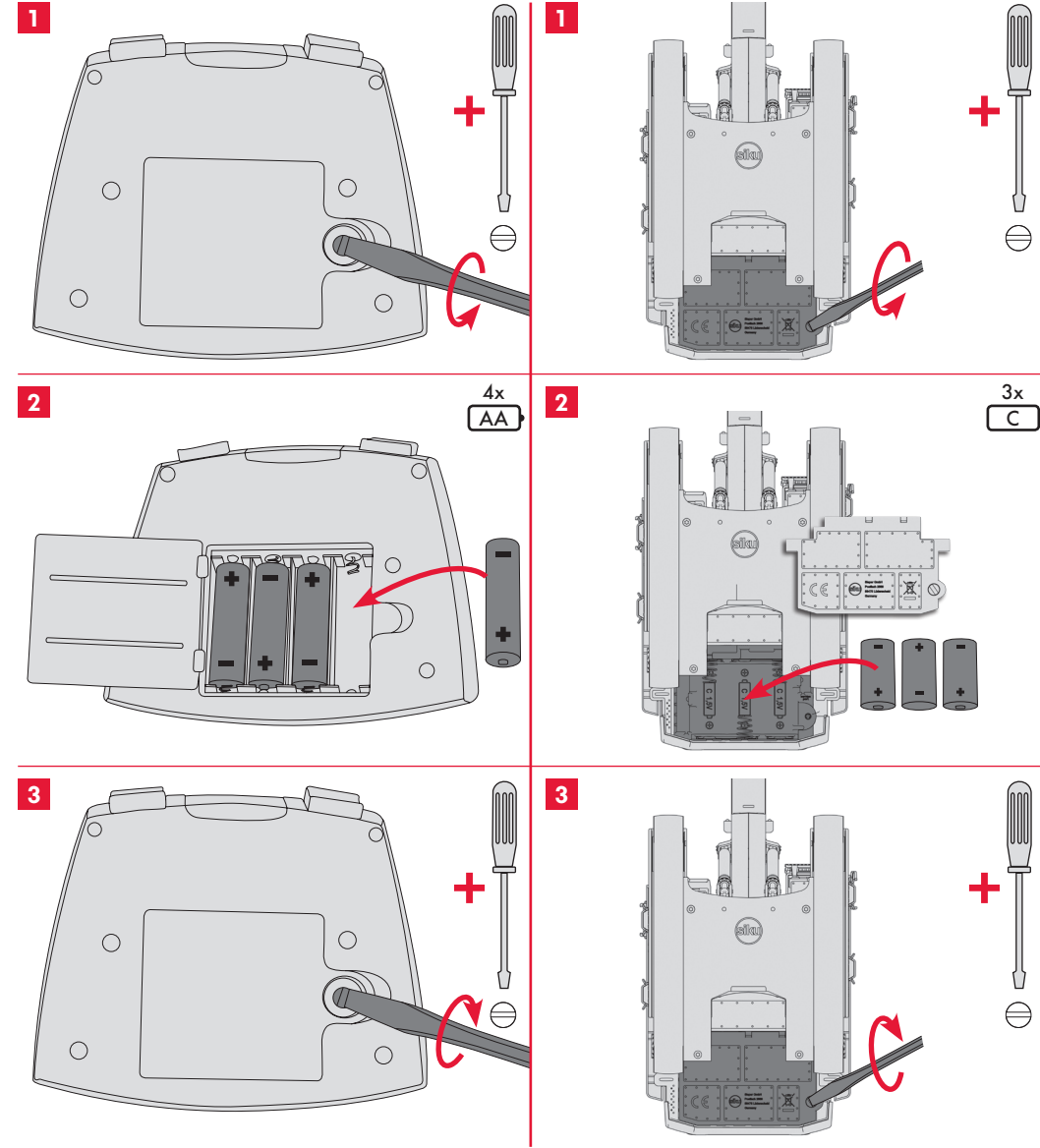
I Ketten nachspannen / Retension chains / Retendre les chaînes / Tensar las cadena / Kettingen spannen



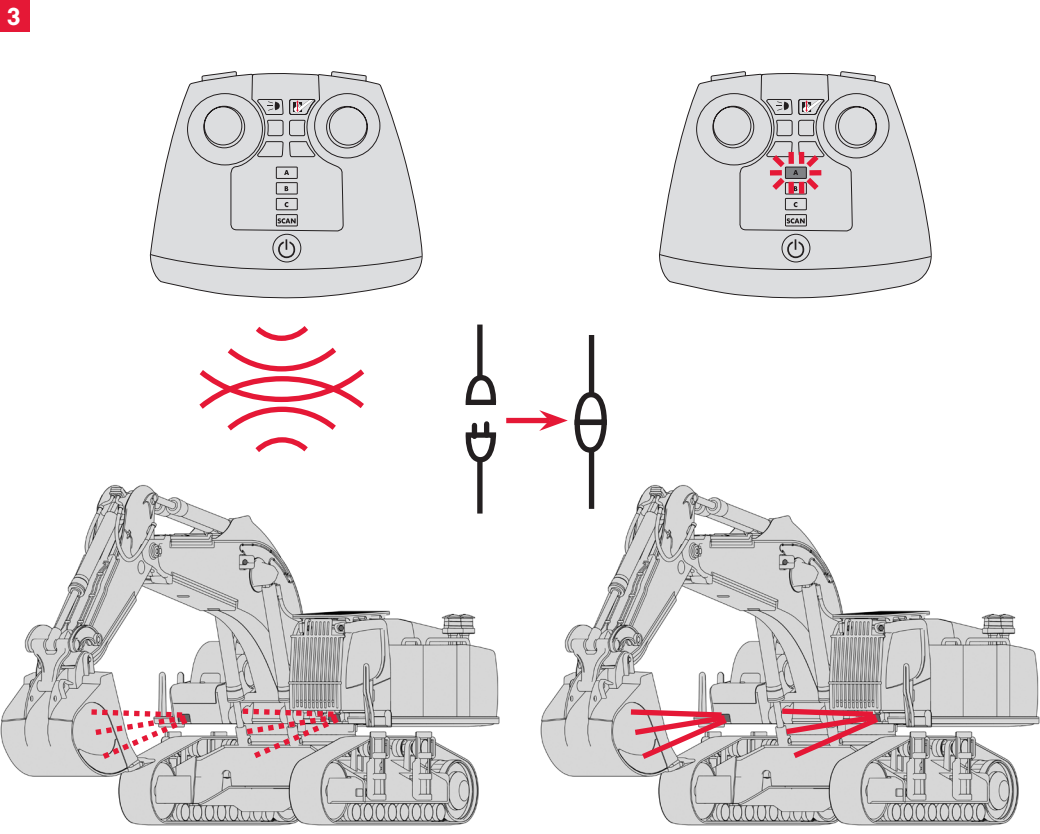
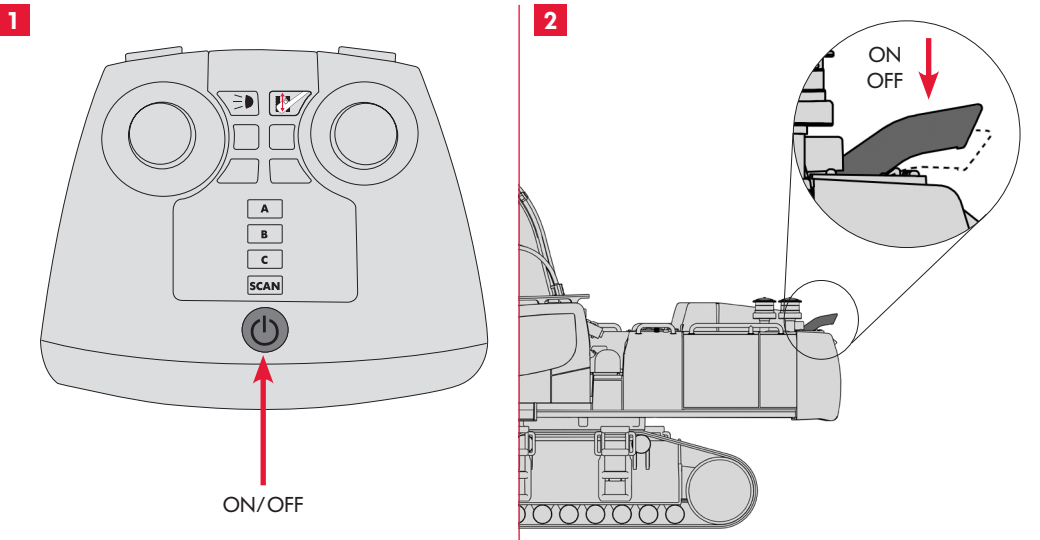
SIKUCONTROL32

Bedienungsanleitung #6740  
Operating Instructions #6740 / Mode d'emploi #6740  
Instrucciones de uso #6740 / Gebruikshandleiding #6740

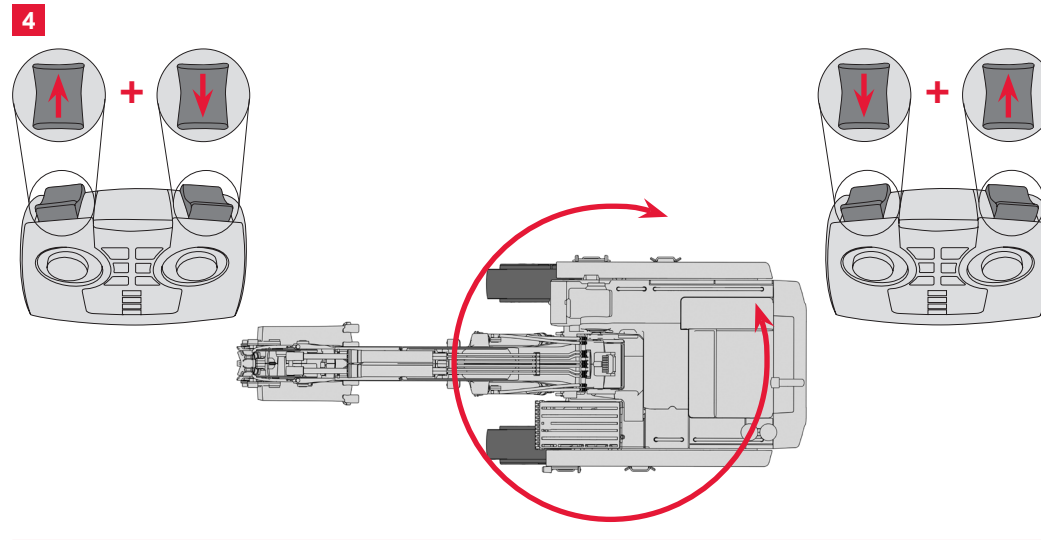
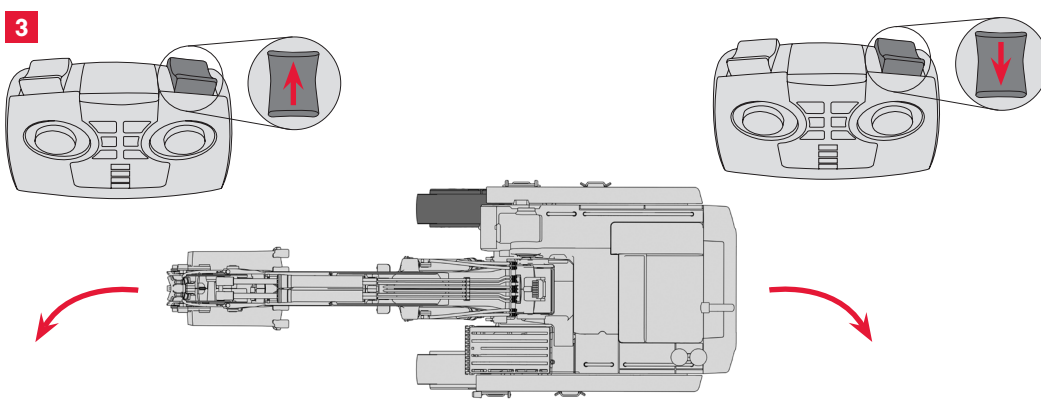
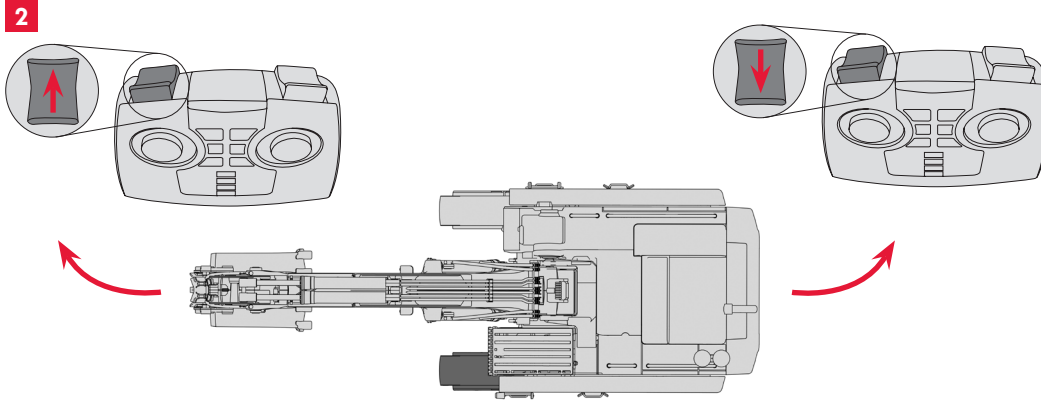
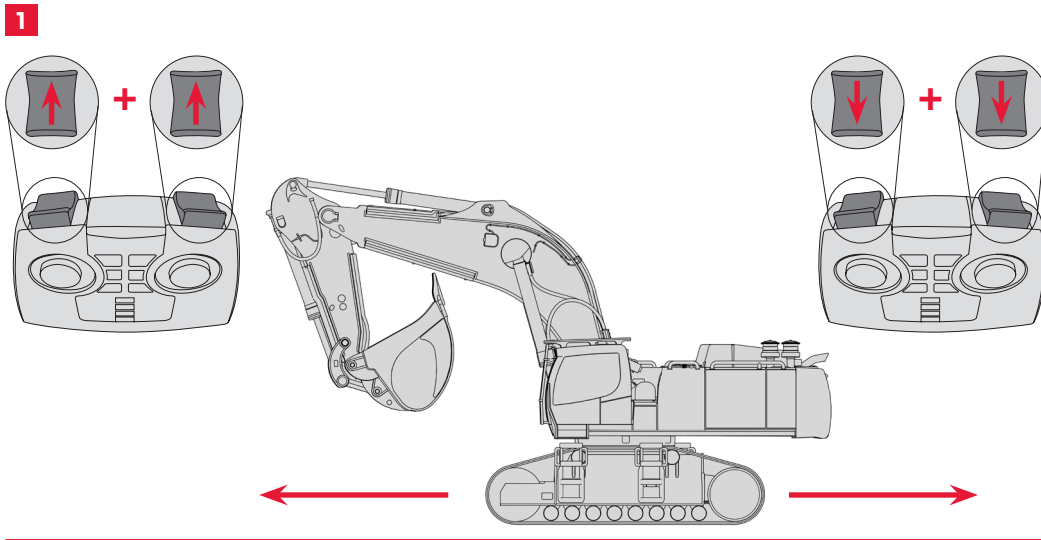
A Batterien einlegen / Inserting the batteries / Placer les piles / Colocación de las pilas / Baterijen plaatsen



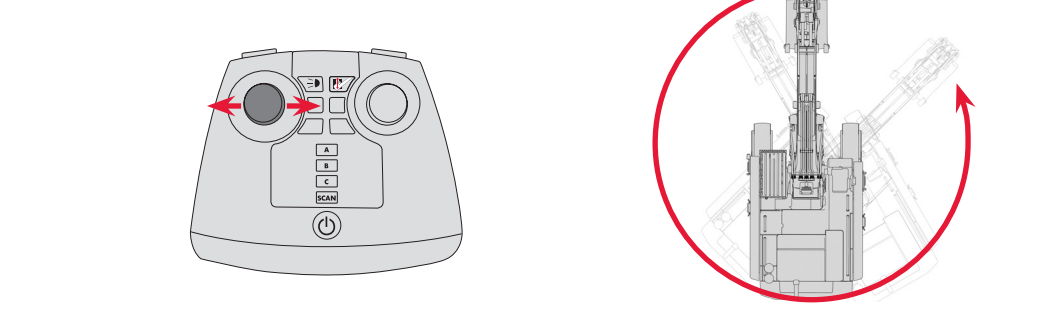
**B Systemstart / System start / Démarrage du système / Inicio del sistema / Systeem starten**



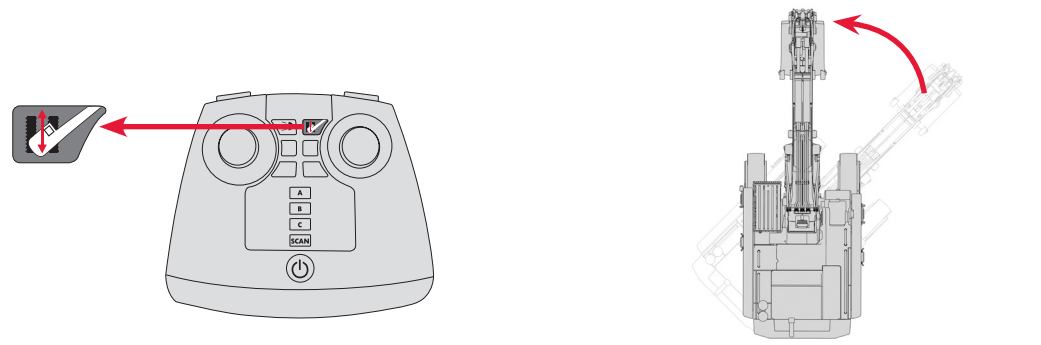
**C Fahrfunktionen / Driving Functions / Fonctions de déplacement / Funciones de manejo / Rijfuncties**



**D Oberwagen drehen / turn upper carriage / Tourner la partie supérieure / Girar la estructura superior / Bovenwagen draaien**



**E Oberwagen in Fahrtrichtung drehen / turn upper carriage into driving direction / Tourner la partie supérieure dans le sens de conduite / Colocar la estructura superior en el sentido de marcha / Bovenwagen in rijrichting draaien**



**F Baggerfunktionen / Excavating Functions / Fonctions d'excavation / Funciones de la excavadora / Graaffuncties**

